

Panasonic

PT-AE300E
PT-AE200E
Home Cinema Projectors

16:9
WIDE PANEL

True Home Cinema Experience



- 1 High-resolution 16:9 wide-screen LCD panels for extra picture quality
- 2 Extra short-throw lens allows display of large images in small rooms
- 3 Easy operation and flexible settings to match your viewing taste

A Five-Star Performer ★★★★★

PT-AE300E



Introducing the high-performance PT-AE300E, a home cinema projector that delivers a level of image quality you would expect to see only in a movie theatre. This slim, stylish projector brings truly beautiful images to your living room with features like high-resolution LCD panels, original SmoothScreen technology, and much more.

- Native 16:9 wide-screen LCD panel
- High resolution 960 x 540 pixels x 3 (R, G, B)
- 800 ANSI lumens brightness
- 800:1 contrast ratio
- SmoothScreen technology for reduced "chicken wire" effect
- Vertical/horizontal keystone correction
- 6 picture mode (Cinema 1, Cinema 2, Music, Dynamic, Sports, Normal)
- 294-pattern user-adjustable picture equalising
- SD Memory Card slot
- Quiet 28 dB
- Colour temperature adjustable
- Back-lit multi-function wireless remote controller
- 28 cm x 27.9 cm x 8.5 cm
- 2.9 kg

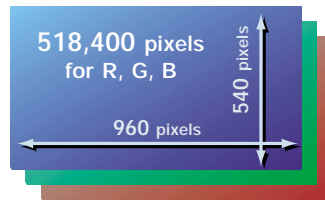
Dynamic, High-Quality Wide Images



High-Resolution Wide LCD Panels

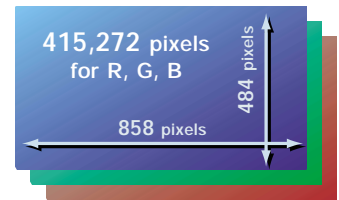
The PT-AE300E uses three of new high-resolution, 960 x 540-pixel wide LCD panels, for sharp, beautiful images from DVD, high-definition digital TV, and other advanced sources. Thanks to brightness of 800 ANSI lumens and high 800:1 contrast, you can enjoy movies with natural colours and clear detail.

Total of 1,555,200 pixels



PT-AE300E's 0.7-inch panels

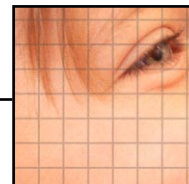
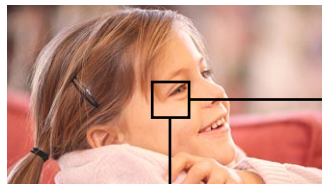
Total of 1,245,816 pixels



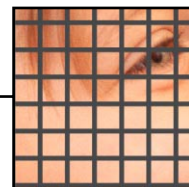
Conventional 0.7-inch panels

SmoothScreen Technology— Minimising the “Chicken Wire” Effect

When an LCD projector shows images on a large screen, black lines can appear between the pixels. This phenomenon—called the chicken wire effect—is minimised in the PT-AE300E by Panasonic's original SmoothScreen technology. Using a double refraction crystal device (see below), SmoothScreen technology reduces the gaps between pixels to give images the same smooth texture you enjoy at the movie theatre.



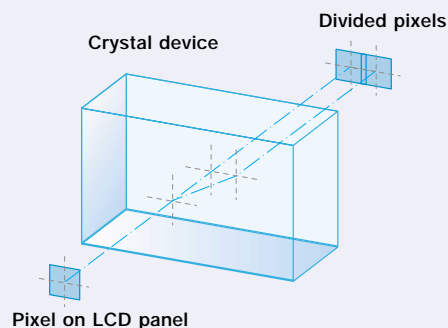
PT-AE300E: Smoothly textured images, as in a movie theatre



Conventional: “Chicken wire” effect

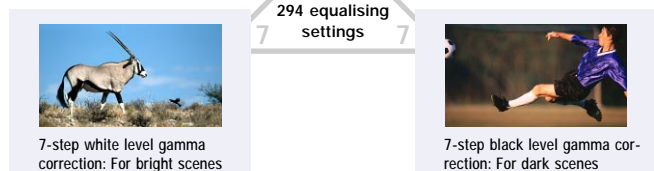
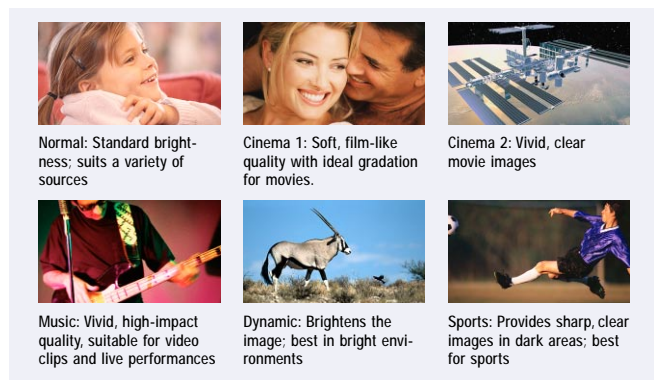
The Double Refraction Crystal Device

As explained above, on a large screen you can sometimes see grid lines—or “chicken wire”—between pixels. In Panasonic's original SmoothScreen technology, use of a special double refraction crystal makes those lines thinner and lightens their colour. You can see the results in the PT-AE300E's clear, sharp, high-resolution images.



294 Equalising Settings for Optimal Picture Quality

The PT-AE300E lets you adjust the colours just the way you want them. You can match the picture to the type of entertainment you're viewing—such as a movie, sports, or a live concert—and the viewing source.



More Flexible Colour Settings

- Colour temperature adjustment (± 3000 K)
- Three sets of picture adjustment settings can be stored in memory

Other Image Enhancements

- Digital Cinema Reality™: Reproduces images that are faithful to the original film source
- Noise reduction: Dramatically reduces ghosts and blurs
- 3-dimensional Y/C separation: Produces clearer, sharper images by suppressing colour bleeding

High Brightness, High Contrast

The high-resolution wide LCD panels combine with a 120-watt UHM™ lamp to deliver brightness of 800 ANSI lumens. Images are easy to view, even in rooms that are not dark. Contrast is also a high 800:1, resulting in deeper blacks and sharper, more detailed images. You get whiter whites, blacker blacks, and vivid, natural colours in everything you watch, from nature programmes to cartoons and animation.



PT-AE300E



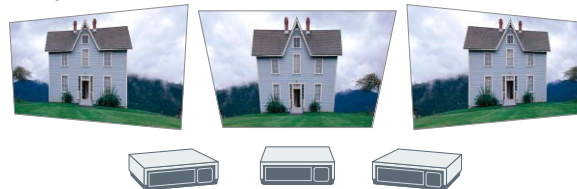
Conventional

Digital Keystone Correction

The PT-AE300E provides both vertical and horizontal keystone correction to compensate for image distortion when the projector is used at an angle to the screen. Vertical keystone correction compensates for distortion in the up-and-down direction, while horizontal correction

compensates for right-to-left distortion. You enjoy distortion-free images when projecting from an angle of up to 30 degrees in any direction (up, down, left or right).

Before keystone correction



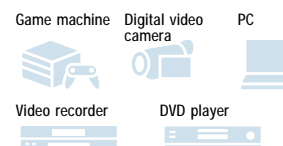
After keystone correction



NOTE: The PT-AE200E features vertical (up-down) keystone correction only.

Terminals for DVD, Video, PC and Game Machines

Use the PT-AE300E with a DVD or video player, a PC, game machines, and more. The component video input terminal lets you enjoy the full quality of images from high-end progressive scan DVD players. The PC IN terminal can be used to connect PCs and game machines. Other terminals include SCART (Euroconnector), video, S-Video, and audio inputs. The PT-AE300E also adds a Digital Visual Interface (DVI), which directly accepts digital signals from PCs.



Quiet Operation—Only 28 dB

A quiet new fan reduces operating noise. The use of twin blades reduces light leakage. Thanks to this special design, you can fully enjoy the beauty of the large-screen images.

Easy Projection with SD Memory Card

The PT-AE300E features an SD Memory Card slot. Simply insert a card containing images taken with a digital still camera or digital video camera, and you can project them onto a large screen. Enjoy fast, easy slide shows without connecting cables or other equipment.

* JPEG images compliant with DCF (Design rule for Camera File system)

** MPEG-4



80-inch Wide-Screen Images at a Distance of 2.5 m

The extra-short-throw lens on the PT-AE300E produces big images in small spaces. For example, you can get an 80-inch diagonal 16:9 wide-screen image from a distance of just 2.5 metres. The image size ranges from 40 to 200 inches, with easy adjustment using the manual zoom.

Slim, Stylish and Compact

Measuring just 28 x 27.9 cm and weighing only about 2.9 kg, the PT-AE300E is thin, compact and easy to carry. You can set it up just about anywhere—on a table, in an AV rack, or mounted to the ceiling (using an optional ceiling mount).

Other Convenient Features

- Back-lit, multi-function wireless remote control
- 7-language on-screen menu operation (English, French, German, Spanish, Italian, Chinese, Japanese)



Beautiful Images, Easy Operation

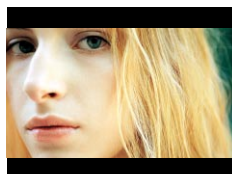
PT-AE200E



The PT-AE200E Home Cinema Projector provides the powerful, high-quality images essential for a true cinema experience at home. With the high quality video images available from DVDs, plus the sound quality of a surround system, your home becomes a theatre.



PT-AE200E: Native 16:9 525p wide panel



Conventional: 4:3 panel

- Native 16:9 wide-screen 525p LCD panel
- High resolution 858 x 484 pixels x 3 (R, G, B)
- 700 ANSI lumens brightness
- 700:1 contrast ratio
- 6 picture mode (Cinema 1, Cinema 2, Music, Dynamic, Sports, Normal)
- Vertical keystone correction
- SD Memory Card slot
- Quiet 28 dB
- Colour temperature adjustable
- Back-lit multi-function wireless remote controller
- 28 cm x 27.9 cm x 8.5 cm
- 2.9 kg

PT-AE300E/AE200E Features at a Glance

Features	PT-AE300E	PT-AE200E
LCD panel	960 x 540 pixels	858 x 484 pixels
Brightness	800 ANSI	700 ANSI
Contrast ratio	800:1	700:1
SmoothScreen technology	Yes	No
Digital keystone correction	Vertical, horizontal	Vertical
Image mode selection	6 modes	6 modes
Gamma correction (white)	7 steps	No
Gamma correction (black)	7 steps	No
Colour temperature adjustment	Yes	Yes

Features	PT-AE300E	PT-AE200E
Digital Cinema Reality™	Yes	No
DVI-D input	Yes	No
SD Memory Card slot	Yes	Yes
Operation noise	28 dB	28 dB
Back-lit multi-function wireless remote	Yes	Yes
Extra-short throw zoom lens	Yes	Yes
Compact body (W x D x H): 28 x 27.9 x 8.5 cm	Yes	Yes
Lightweight: 2.9 kg	Yes	Yes

Compact and Lightweight

Top view



Connection Flexibility

Rear view of the PT-AE300E



Rear view of the PT-AE200E



Specifications

Power supply	100–240 V AC, 50/60 Hz
Power consumption	180 W (0.5 W in standby mode with fan stopped)
LCD panel	0.7-inch diagonal polysilicon TFT wide panels (x3)
Aspect ratio:	16:9 (4:3 selectable)
Pixels	
PT-AE300E	1,555,200 pixels, 960 x 540 (x 3)
PT-AE200E	1,245,816 pixels, 858 x 484 (x 3)
Lens	Manual zoom/focus lens
	F 2.0–2.3, f 22.0–26.2 mm
Optical shift	17:1 (fixed, 16:9 aspect ratio)
Lamp	120 W UHM™ lamp
Brightness	
PT-AE300E	800 ANSI lumens* (high lamp power mode)
PT-AE200E	700 ANSI lumens* (high lamp power mode)
Uniformity	More than 90%
Contrast ratio	
PT-AE300E	800:1 (full white/full black)
PT-AE200E	700:1 (full white/full black)
Projection size	40"–200" / 1.2–9.0 m (aspect ratio: 16:9)
Installation	Ceiling/desk, front/rear (menu selection)
Scanning frequency	
RGB	fH 30–70 kHz, fv 50–87 Hz
YPbPr	525i (480i), 625i (576i), 525p (480p), 750p (720p), 1125i (1080i)
Colour system	NTSC, NTSC4.43, PAL, PAL-M, PAL-N, PAL60, SECAM
Audio output	2 W (mono)
Input	
Video	RCA pin jack
S-Video	DIN 4-pin
Audio	RCA pin jack x 2 (L, R)
DVI (PT-AE300E only)	DVI-D 24-pin
PC	D-sub HD 15-pin
Component	RCA pin jack x 3 (Y, Pb/Cb, Pr/Cr)
AV1	SCART
SD Memory Card	DCF compliant
Still pictures	MPEG-4 compliant (audio: G.726 compliant)
Motion pictures	DDC1/2B compliant
Plug & Play	
Digital keystone correction	
PT-AE300E	Vertical and horizontal
PT-AE200E	Vertical
Dimensions	280 x 85 x 279 mm (including lens)
(W x H x D)	(11" x 3-11/32" x 10-1/32")
Weight	2.9 kg (6.4 lbs.)
Fun noise	28 dB (low lamp power mode)
Operating environment	
Temperature	0°–40°C (32°–104°F)
Humidity	20%–80% (no condensation)
Supplied Accessories	<ul style="list-style-type: none"> • AC cord (3 m/9.9') • Carrying bag • AV cable (3 m/9.9') • Wireless remote control • Batteries for remote control • Lens cap • User's manual

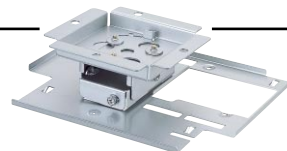
Image size / projection distance

Aspect ratio	Diagonal image size	Distance to screen			
		min.		max.	
16:9	40" / 1.0 m / 3.3'	1.2 m / 3.9'	1.4 m / 4.6'		
	60" / 1.5 m / 4.9'	1.9 m / 6.2'	2.2 m / 7.2'		
	80" / 2.0 m / 6.7'	2.5 m / 8.3'	2.9 m / 9.5'		
	100" / 2.5 m / 8.3'	3.1 m / 10.2'	3.7 m / 12.1'		
	150" / 3.8 m / 12.5'	4.7 m / 15.4'	5.6 m / 18.4'		
200" / 5.1 m / 16.7'	6.2 m / 20.3'	7.4 m / 24.3'			
4:3	40" / 1.0 m / 3.3'	1.5 m / 4.9'	1.8 m / 5.9'		
	60" / 1.5 m / 4.9'	2.3 m / 7.5'	2.7 m / 8.9'		
	80" / 2.0 m / 6.7'	3.0 m / 9.8'	3.6 m / 11.8'		
	100" / 2.5 m / 8.3'	3.8 m / 12.5'	4.6 m / 15.1'		
	150" / 3.8 m / 12.5'	5.7 m / 18.7'	6.9 m / 22.6'		
200" / 5.1 m / 16.7'	7.6 m / 24.9'	9.2 m / 30.2'			

* Image sizes and distances shown above are approximate.

Optional Accessories

Ceiling mount bracket: ET-PKE300



Replacement lamp unit: ET-LAE300

Screen: ET-SR90CT
80"–90" diagonal,
W x H: 1.8 x 1.8 m
(5.9' x 5.9')



Screen: ET-SR70CT
65"–70" diagonal,
W x H: 1.4 x 1.4 m
(4.6' x 4.6')



Panasonic

Panasonic is the brandname of Matsushita Electric.

Weights and dimensions shown are approximate. Specifications subject to change without notice. This product may be subject to export control regulations. UHM is a trademark of Matsushita Electric Industrial Co., Ltd. PS/2, VGA and XGA are trademarks of International Business Machines Corporation. Macintosh is a registered trademark of Apple Computer, Inc. SVGA is a registered trademark of the Video Electronics Standards Association. Windows is a registered trademark of Microsoft Corporation. All other trademarks are the property of their respective trademark owners. Projection images simulated.